



Platinum Energy Package

The Most Energy Efficient Log Home Design



Energy costs continue to rise, and building codes for residential energy usage are more and more challenging to meet. Whether you will live in an area that has higher standards, or you simply want the most energy efficient log home design available, eLoghomes now has the solution...



The eLoghomes' Platinum Energy Package Includes:

- ⚠ **Upgrade to full 8"x8" log walls**, and constructed with our 6-Point Weatherlink Log Wall System, on the first floor. The thermal mass of log walls performs exceptionally well as an insulating barrier to retain heat in the winter, and maintain desired temperatures in the interior over the warmer months. We offer a choice of log profiles and corner options.
- ⚠ **Structural Insulated Panels (SIPs)** on the second floor (if/as needed) and upper gable ends provide higher R-value and tight, continuous wall construction, minimizing air infiltration. SIPs replaces the traditionally framed exterior walls and insulation typically found in log home designs on the upper level. (see [SIPs Details](#) on eLoghomes website). The upper level walls are then tightly sided on the exterior with the same Eastern White Pine and profile of your choice.
- ⚠ **SIPs roofing** offers higher R-Value, as well as increased snow load levels, often without the need for additional rafters and resulting in a cleaner looking vaulted ceiling.
- ⚠ **Andersen A Series triple pane windows** for the maximum energy savings. In addition, the A Series windows, combined with Andersen's A Series glass doors, further elevates the architectural design of the home.

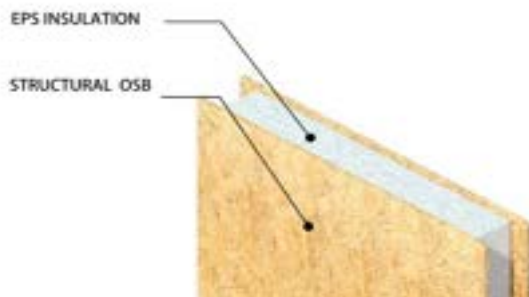


For more information on the Platinum Energy package, please visit our [website](#), register or contact us at 888-675-3678 and info@eloghomes.com

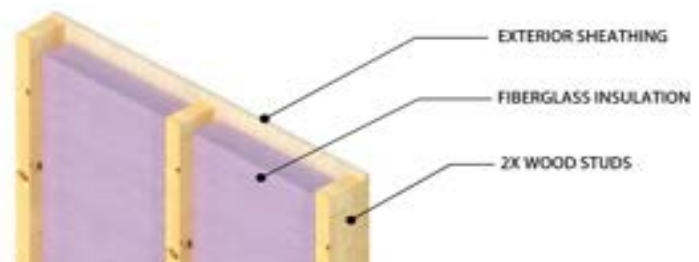


- △ With the Platinum Energy Package, eLoghomes passes on the cost reduction we obtain in constructing your log home shell when using Structuring Insulated Panels vs. traditional framing for exterior walls and roofing.

STRUCTURAL INSULATED PANEL



TRADITIONAL WOOD FRAMING



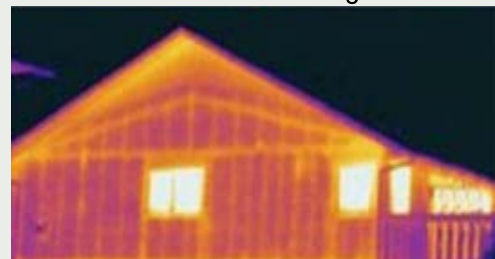
More Savings During and After Construction of Your Log Home or Cabin!

- △ With thermal imaging, SIPs walls and roofing show a continuous thermal barrier. Traditional framing image shows areas of possible air infiltration.
- △ eLoghomes also offers an HVAC design review by a professional engineer, which can lead to additional cost reduction in the heating and cooling equipment purchased for the home.

Structural Insulated Panels



Traditional Framing



eLoghomes is the industry leader in energy efficient log home design. We look forward to working with you on your energy efficient dream home!